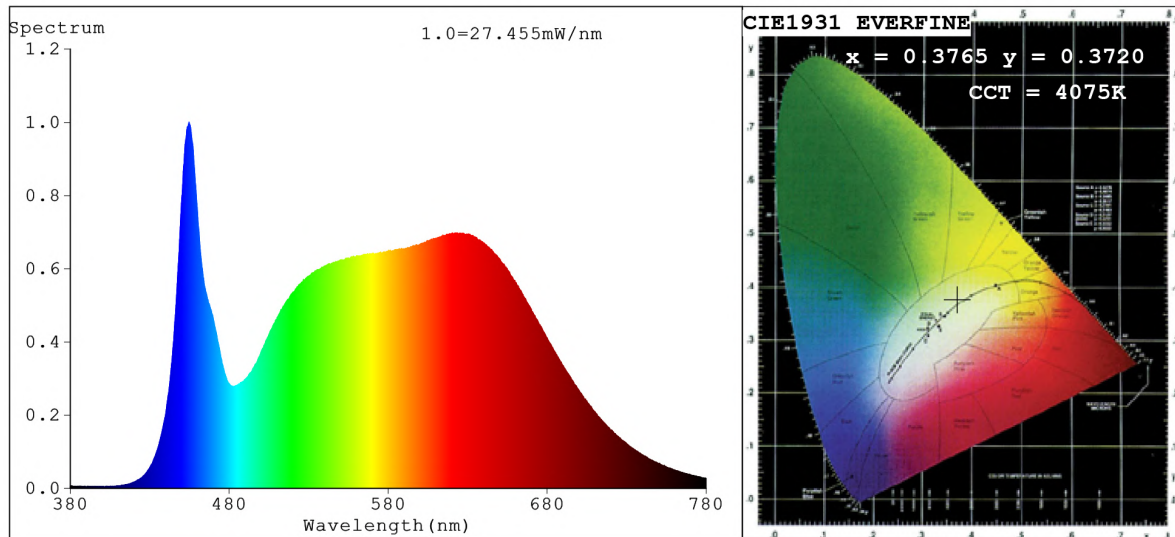


## Spectrum Test Report



### Color Parameters:

Chromaticity Coordinate:  $x=0.3765$   $y=0.3720$   $u'=0.2244$   $v'=0.4989$   
 CCT=4075K (Duv=-0.0011) Dominant WL:Ld =579.4nm Purity=24.6%  
 Ratio:R=19.7% G=76.1% B=4.2%; Peak WL:Lp=454.6nm FWHM=21.3nm  
 Render Index:Ra=94.0 CRI=90.8 TM30:Rf=90 Rg=100  
 R1 =95 R2 =97 R3 =95 R4 =93 R5 =93 R6 =92 R7 =96  
 R8 =92 R9 =80 R10=89 R11=92 R12=66 R13=96 R14=97 R15=94

### Photo Parameters:

Flux = 1190 lm Eff. : 99.82 lm/W Fe = 4.250 W Scotopic:2179.2 S/P:1.8133

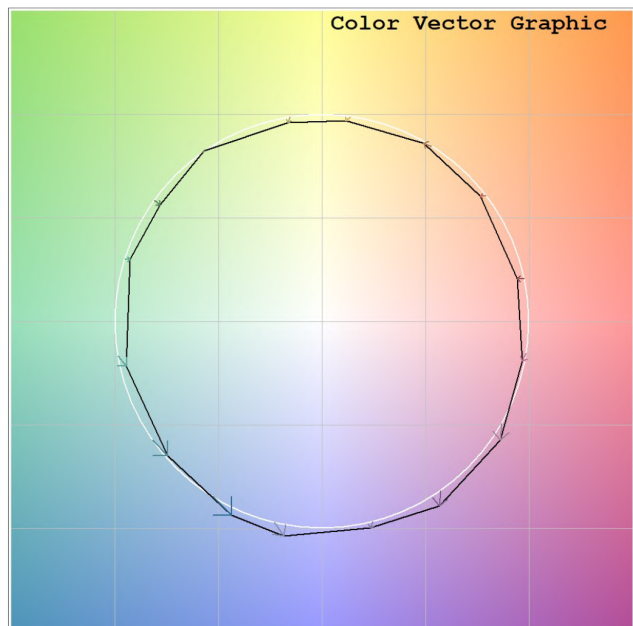
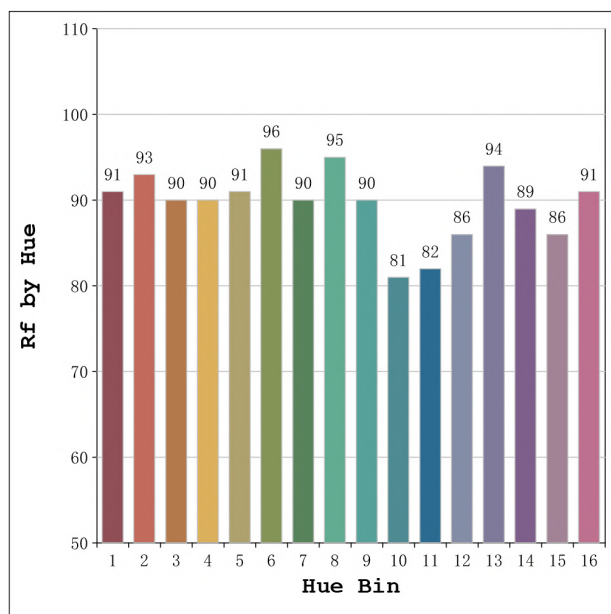
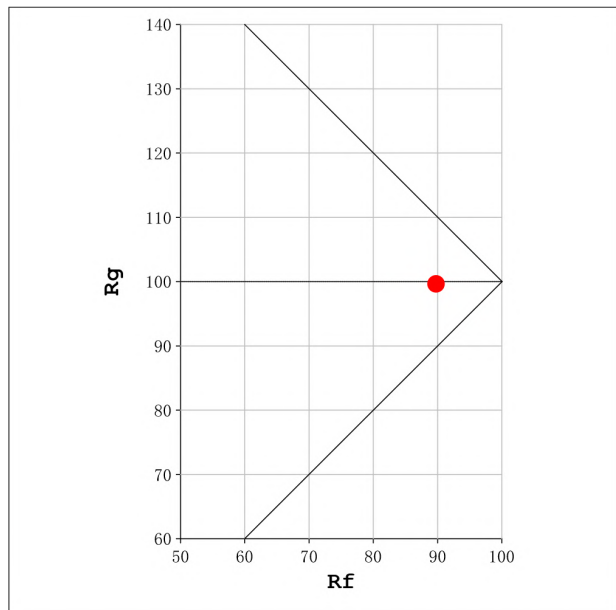
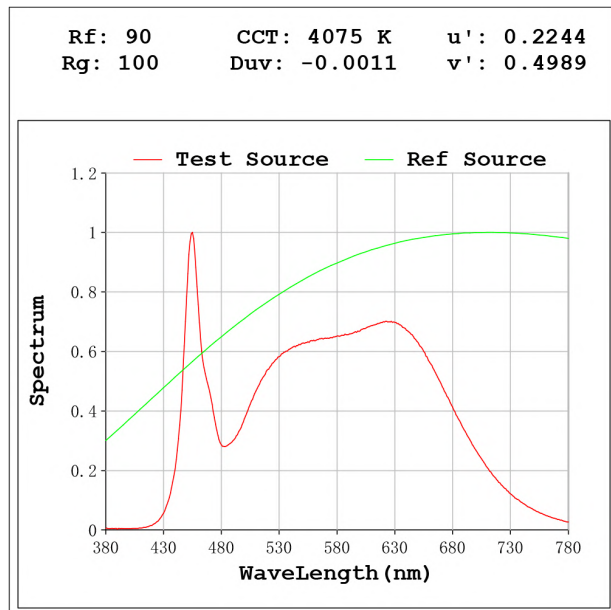
### Electrical parameters:

V = 23.998 V I = 0.5017 A P = 12.04 W PF = 1.000

Status: Integral T = 1000 ms Ip = 38791 (59%)

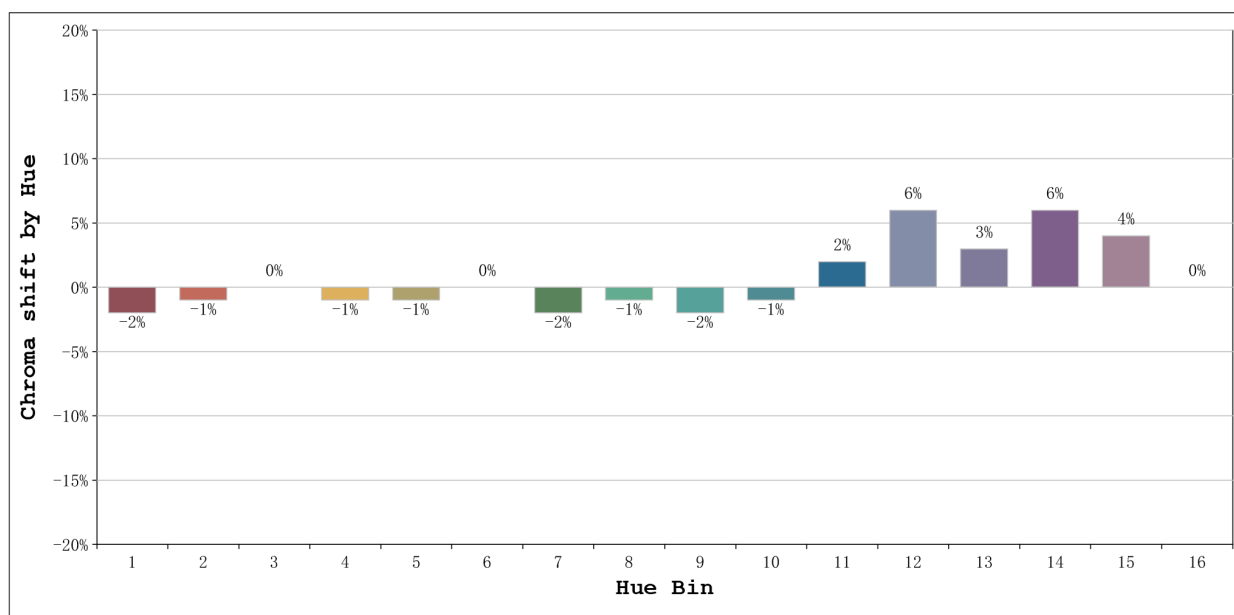
Model:Ecoled Free Cut 4000K  
 Tester:Sergio Carneros  
 Temperature:20Deg  
 Manufacturer:Luz Negra

Number: 34.044  
 Date:2023-12-13 09:52:59  
 Humidity:50%  
 Remarks:100cm de tira flexible



Model:Ecoled Free Cut 4000K  
 Tester:Sergio Carneros  
 Temperature:20Deg  
 Manufacturer:Luz Negra

Number: 34.044  
 Date:2023-12-13 09:52:59  
 Humidity:50%  
 Remarks:100cm de tira flexible



			Graphic shift(%)	
Hue Bin	Hue Angle	Rf	Chroma	Hue
1	0.0° - 22.5°	91	-2	0
2	22.5° - 45.0°	93	-1	1
3	45.0° - 67.5°	90	0	4
4	67.5° - 90.0°	90	-1	2
5	90.0° - 112.5°	91	-1	1
6	112.5° - 135.0°	96	0	0
7	135.0° - 157.5°	90	-2	0
8	157.5° - 180.0°	95	-1	0
9	180.0° - 202.5°	90	-2	5
10	202.5° - 225.0°	81	-1	10
11	225.0° - 247.5°	82	2	13
12	247.5° - 270.0°	86	6	6
13	270.0° - 292.5°	94	3	-1
14	292.5° - 315.0°	89	6	-4
15	315.0° - 337.5°	86	4	-6
16	337.5° - 360.0°	91	0	-3

Model:Ecoled Free Cut 4000K  
 Tester:Sergio Carneros  
 Temperature:20Deg  
 Manufacturer:Luz Negra

Number: 34.044  
 Date:2023-12-13 09:52:59  
 Humidity:50%  
 Remarks:100cm de tira flexible